



ADRIANUS



MAIN PARTICULARS :

Main Engines:	2x
Make:	MTU
Model:	Series 60
HP:	760 hp each

PRINCIPAL PARTICULARS :

Bow Thruster:	1x
HP:	70hp
Genset's:	2x
Engine Make:	Kohler
Engine Model:	45EFOZDJ's
kVA:	45 kVA each (self-synchronizing for 90 kVA)

PROPULSION AND MACHINERY :

Fuel capacity:	12,000
----------------	--------

PERFORMANCE :

Max Speed:	TBA (was 18kts) fuel burn	TBA
Cruise speed:	TBA (was 15kts) fuel burn	TBA

ACCOMMODATION :

Accommodation:	16
Cabins:	7 (6x 2 berth & 1x 4 Berth)
Bathrooms:	3
Heads:	3

GALLERY :

Fridge capacity:	1200 L
Freezer capacity:	830 L

DECK EQUIPMENT :

A-Frame:	5t
Winch:	5t
Crane:	2t at 6 mt
Workstations:	Suits 4 operators with ample desk space. HDMI and Cat to helm and above and below desk 10 and 15 Amps 240v outlets. Cable access to rooftop and down to moonpool.

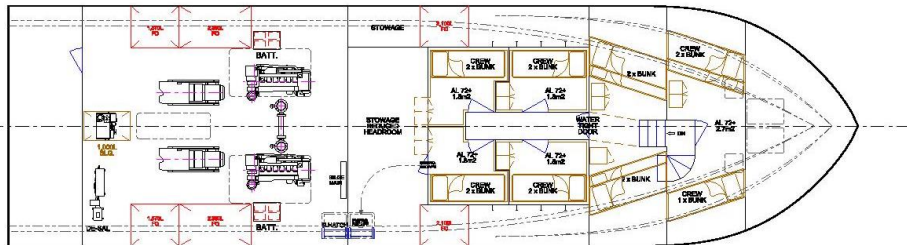
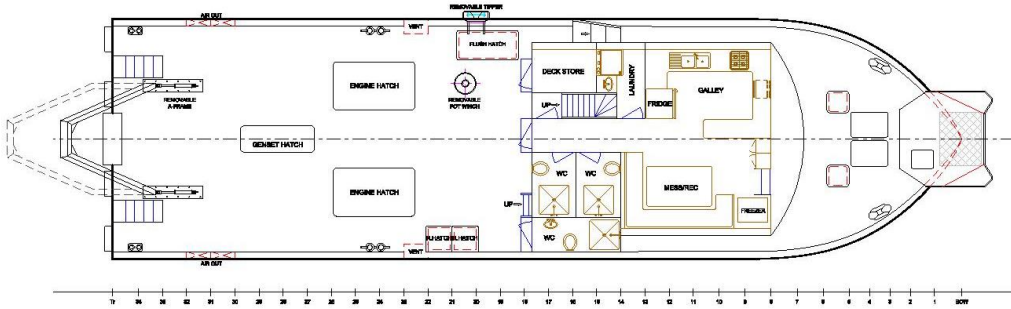
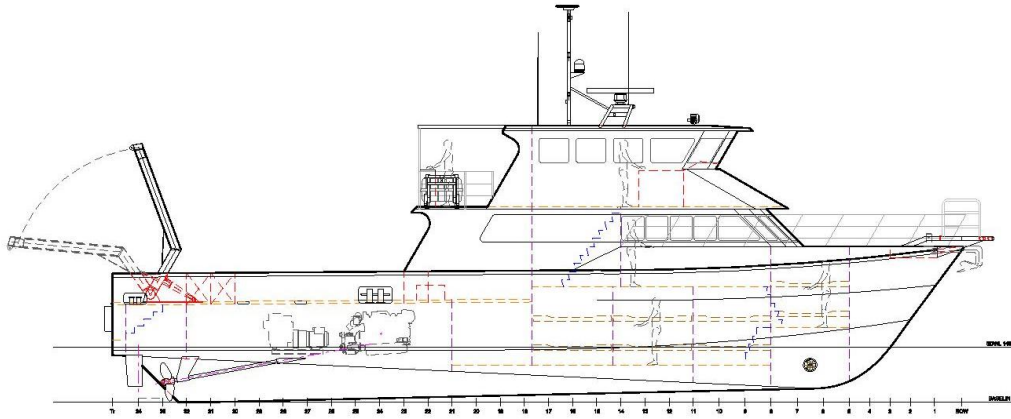
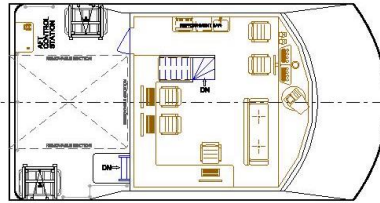
MOONPOOL :

Moonpool:	1x
Size:	1mt x 1mt at Mid Ships.

FRESHWATER MAKER :

Freshwater maker:	1x
Make:	SWAM-1PH
Capacity:	500 l/h

PRINCIPAL PARTICULARS	
LENGTH MEAS.	m 22.8
LENGTH O.A.	m 23.7
BEAM MAX.	m 6.5



SOUTHERLY DESIGNS
 © Owned by: Rory Donohoy, Western Australia 61553. Tel: +61 8 9467 8700. www.southerly.com.au

**23.0m UTILITY VESSEL
 "ADRIANUS"
 GENERAL ARRANGEMENT**

INCORPORATING COMMENTS PPT 113
 AND 20-20-20-20-20
 THE DRAWING IS THE SOLE PROPERTY OF
 SOUTHERLY DESIGNS PVT LTD AND MUST NOT
 BE REPRODUCED OR TRANSMITTED IN ANY
 FORM OR BY ANY MEANS, ELECTRONIC,
 MECHANICAL, PHOTOCOPYING, RECORDING,
 OR BY ANY INFORMATION STORAGE AND
 RETRIEVAL SYSTEM, WITHOUT THE EXPRESS
 PERMISSION OF SOUTHERLY DESIGNS PVT LTD

REV	DATE	BY
ADD	10/08/20	MP
ADD	10/08/20	MP
ADD	10/08/20	TS
ADD	10/08/20	MP
ADD	10/08/20	MP

REVISION	DESCRIPTION
01	ISSUED FOR REVIEW
02	LOWERING AND RIGGING FOR LIFTING BEST TUBES INTO
03	WORKSPACE REVISIONS
04	REVISIONS TO RIGGING AND WORKSPACE REVISIONS
05	REVISED

DRAWING NUMBER: **S458-110 A-D4**

Scale: 1:100
 Sheet: 1 of 2
 A3



Odyssey Marine Pty Ltd
 Inshore Vessels Services

info@odysseymarine.com.au
 www.odysseymarine.com.au

Suite 7, Level 2
 34 Charles Street
 South Perth WA 6151